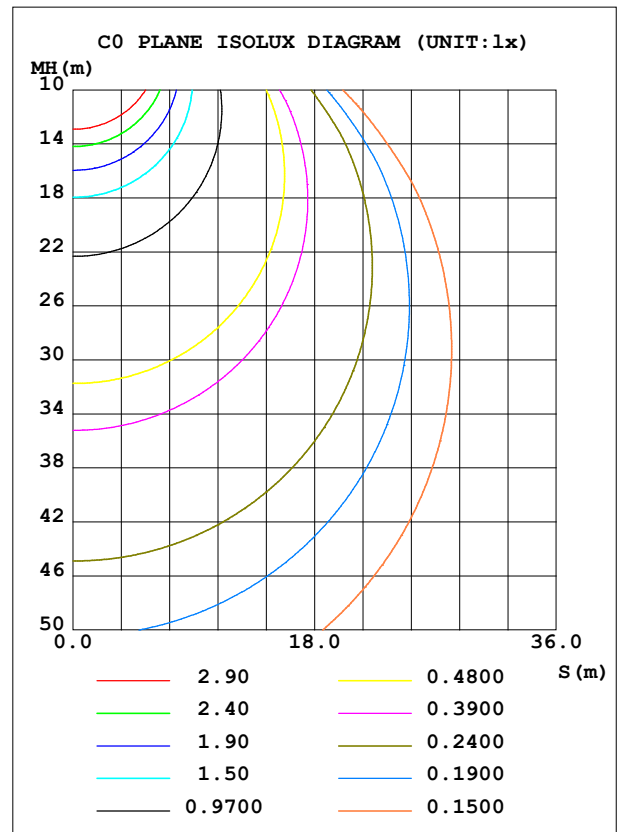
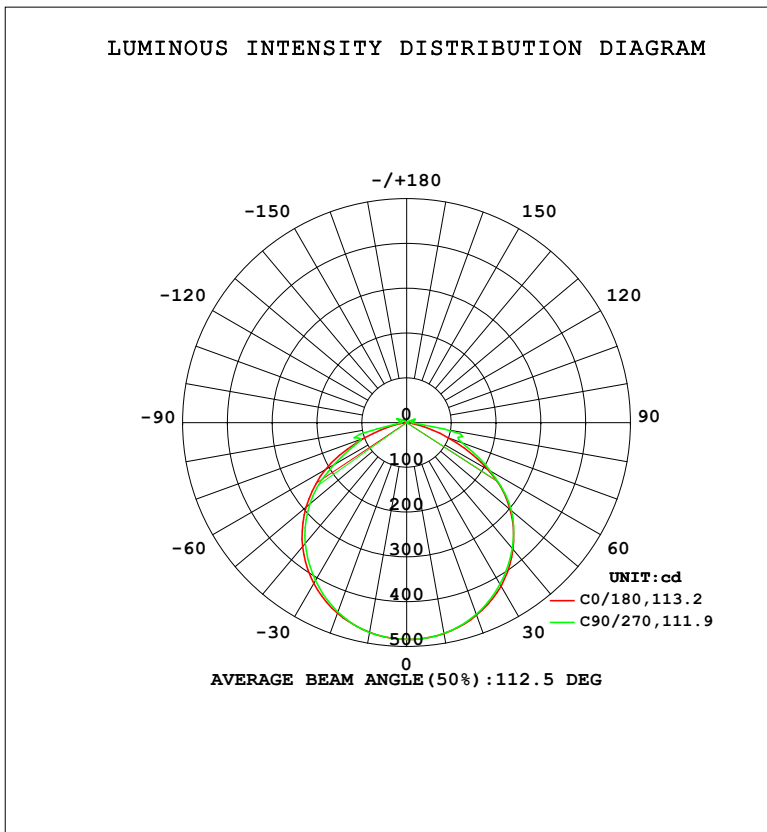


LUMINAIRE PHOTOMETRIC TEST REPORT

NAME: 3030 80D F12-A	TYPE:	WEIGHT:
SPEC.:	DIM.:	SERIAL No.:
MFR.:	SUR.: 0.012*1	Shielding Angle:

DATA OF LAMP		PHOTOMETRIC DATA			
MODEL	3000K RA80	Imax (cd)	484.2	S/MH (C0/180)	1.27
NOMINAL POWER (W)	9.6	LOR (%)	100.0	S/MH (C90/270)	1.25
RATED VOLTAGE (V)	24	TOTAL FLUX (lm)	1410.7	η UP, DN (C0-180)	1.2, 50.0
NOMINAL FLUX (lm)	17.6334	CIE CLASS	DIRECT	η UP, DN (C180-360)	1.5, 47.3
LAMPS INSIDE	80	η up (%)	2.7	CIBSE SHR NOM	1.25
TEST VOLTAGE (V)	24	η down (%)	97.3	CIBSE SHR MAX	1.35



C Range: 0 - 360DEG
 C Interval: 22.5DEG
 Test Speed: HIGH
 Temperature: 25.3DEG
 Operators:
 Test Date: 2024-01-15

γ Range: 0 - 180DEG
 γ Interval: 2.0DEG
 Test System: EVERFINE GO-2000B_V1 SYSTEM V2.00.450
 Humidity: 65.0%
 Test Distance: 6.040m [K=1.0000]
 Remarks:

ZONAL FLUX DIAGRAM

ZONAL FLUX DIAGRAM:

γ	C0	C45	C90	C135	C180	C225	C270	C315	γ	Φ zone	Φ total	%lum,lamp
10	478.1	478.4	477.9	476.9	475.6	475.5	475.8	477.1	0- 10	45.87	45.87	3.25,3.25
20	457.4	457.5	455.3	454.7	452.5	451.0	449.5	453.9	10- 20	132.0	177.8	12.6,12.6
30	421.5	420.1	416.8	416.3	414.8	410.0	407.3	413.6	20- 30	201.2	379.0	26.9,26.9
40	369.7	367.4	366.9	362.9	361.7	353.6	352.3	358.0	30- 40	244.1	623.1	44.2,44.2
50	301.6	301.0	305.0	296.5	292.8	283.0	282.0	287.6	40- 50	254.1	877.2	62.2,62.2
60	209.0	220.8	215.7	217.9	210.1	198.5	186.8	201.1	50- 60	225.5	1103	78.2,78.2
70	98.48	117.2	132.2	116.0	99.75	98.59	108.6	99.18	60- 70	156.3	1259	89.3,89.3
80	13.79	95.24	86.15	89.26	14.75	57.58	37.50	57.79	70- 80	89.85	1349	95.6,95.6
90	0.2077	11.43	12.62	10.99	0.2471	10.76	12.78	11.52	80- 90	23.33	1372	97.3,97.3
100	0.2916	14.70	12.12	13.05	0.3550	12.94	13.72	14.53	90-100	10.54	1383	98,98
110	0.4676	12.04	19.67	14.08	0.5206	13.11	23.98	14.56	100-110	12.70	1395	98.9,98.9
120	0.6700	1.993	7.862	2.155	0.7124	6.324	13.48	7.255	110-120	8.522	1404	99.5,99.5
130	0.8566	0.9084	2.315	0.8527	0.9017	2.632	8.399	3.141	120-130	3.254	1407	99.8,99.8
140	1.035	1.026	1.104	1.031	1.075	1.365	3.797	1.320	130-140	1.469	1409	99.9,99.9
150	1.183	1.173	1.209	1.189	1.228	1.376	1.550	1.378	140-150	0.8171	1410	99.9,99.9
160	1.309	1.299	1.335	1.320	1.348	1.428	1.523	1.438	150-160	0.6163	1410	100,100
170	1.414	1.418	1.448	1.427	1.448	1.494	1.532	1.498	160-170	0.4014	1411	100,100
180	1.488	1.491	1.521	1.491	1.488	1.507	1.521	1.509	170-180	0.1413	1411	100,100
DEG	LUMINOUS INTENSITY:cd									UNIT:lm		

Conical surface Flux(90deg): 776.67 lm

%lum = 55.1%

%lamp = 55.1%

Conical surface Flux(120deg): 1102.7 lm

%lum = 78.2%

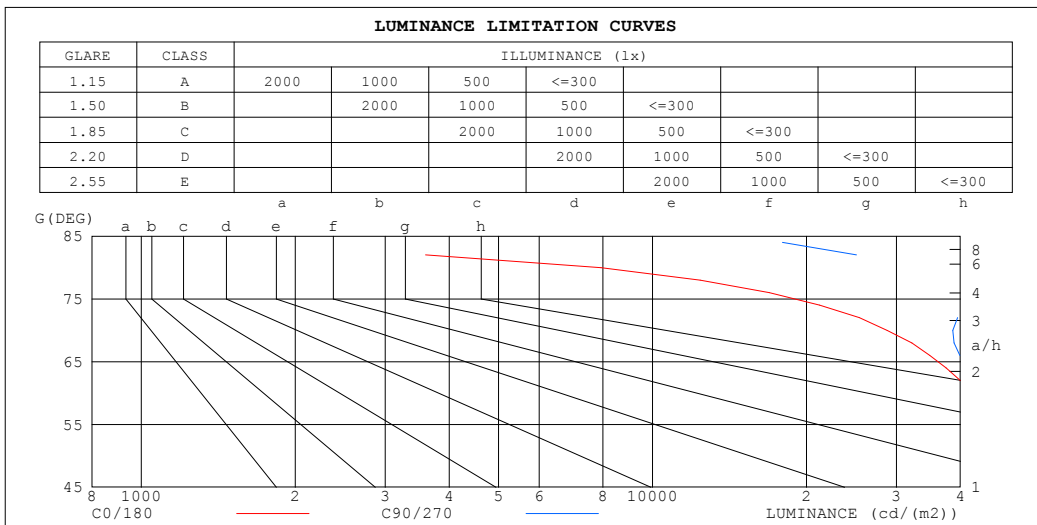
%lamp = 78.2%

C Range: 0 - 360DEG
 C Interval: 22.5DEG
 Test Speed: HIGH
 Temperature:25.3DEG
 Operators:
 Test Date:2024-01-15

γ Range: 0 - 180DEG
 γ Interval: 2.0DEG
 Test System:EVERFINE GO-2000B_V1 SYSTEM V2.00.450
 Humidity:65.0%
 Test Distance:6.040m [K=1.0000]
 Remarks:

LUMINANCE LIMITATION CURVES

NAME: 3030 80D F12-A	TYPE:	WEIGHT:
SPEC.:	DIM.:	SERIAL No.:
MFR.:	SUR.: 0.012*1	Shielding Angle:



LUMINANCE cd/(m2)		
G (DEG)	C0/180	C90/270
85	386	21539
80	7931	49651
75	22616	46378
70	28756	38694
65	38913	42679
60	41743	43182
55	46937	47485
50	46859	47486
45	48642	48690

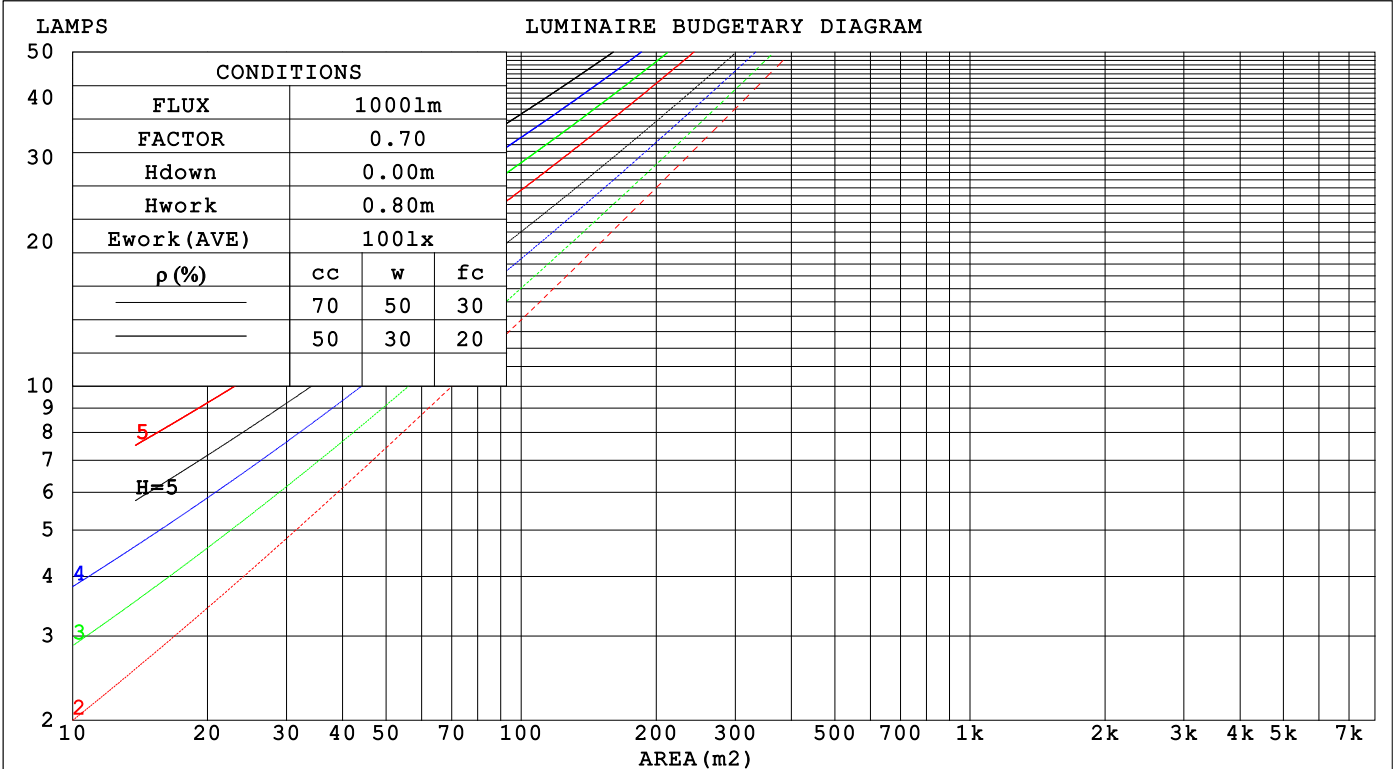
C Range: 0 - 360DEG
 C Interval: 22.5DEG
 Test Speed: HIGH
 Temperature: 25.3DEG
 Operators:
 Test Date: 2024-01-15

γ Range: 0 - 180DEG
 γ Interval: 2.0DEG
 Test System: EVERFINE GO-2000B_V1 SYSTEM V2.00.450
 Humidity: 65.0%
 Test Distance: 6.040m [K=1.0000]
 Remarks:

CU AND LUMINAIRE BUDGETARY ESTIMATE DIAGRAM

NAME: 3030 80D F12-A	TYPE:	WEIGHT:
SPEC.:	DIM.:	SERIAL No.:
MFR.:	SUR.: 0.012*1	Shielding Angle:

ρcc	80%			70%			50%			30%			10%			0
	50%	30%	10%	50%	30%	10%	50%	30%	10%	50%	30%	10%	50%	30%	10%	0
ρw																
ρfc	20%			20%			20%			20%			20%			0
RCR	RCR:Room Cavity Ratio Coefficients of Utilization(CU)															
0.0	1.18	1.18	1.18	1.15	1.15	1.15	1.10	1.10	1.10	1.04	1.04	1.04	.00	.00	.00	.97
1.0	1.04	.99	.96	1.01	.97	.94	.96	.93	.90	.92	.89	.87	.88	.86	.84	.82
2.0	.90	.84	.78	.88	.82	.77	.84	.79	.75	.81	.76	.73	.77	.74	.71	.68
3.0	.79	.71	.65	.78	.70	.64	.74	.68	.63	.71	.66	.61	.68	.64	.60	.58
4.0	.70	.62	.55	.69	.61	.55	.66	.59	.53	.63	.57	.52	.61	.56	.51	.49
5.0	.63	.54	.47	.62	.53	.47	.59	.52	.46	.57	.51	.45	.55	.49	.45	.43
6.0	.57	.48	.41	.56	.47	.41	.53	.46	.40	.51	.45	.40	.50	.44	.39	.37
7.0	.51	.43	.36	.50	.42	.36	.49	.41	.36	.47	.40	.35	.45	.39	.35	.33
8.0	.47	.38	.32	.46	.38	.32	.44	.37	.32	.43	.36	.32	.42	.36	.31	.29
9.0	.43	.35	.29	.42	.34	.29	.41	.34	.29	.40	.33	.28	.38	.32	.28	.26
10.0	.40	.32	.26	.39	.31	.26	.38	.31	.26	.37	.30	.26	.36	.30	.26	.24



C Range: 0 - 360DEG
 C Interval: 22.5DEG
 Test Speed: HIGH
 Temperature: 25.3DEG
 Operators:
 Test Date: 2024-01-15

γ Range: 0 - 180DEG
 γ Interval: 2.0DEG
 Test System: EVERFINE GO-2000B_V1 SYSTEM V2.00.450
 Humidity: 65.0%
 Test Distance: 6.040m [K=1.0000]
 Remarks:

WEC AND CCEC

NAME: 3030 80D F12-A	TYPE:	WEIGHT:
SPEC.:	DIM.:	SERIAL No.:
MFR.:	SUR.: 0.012*1	Shielding Angle:

ρ_{cc}	80%			70%			50%			30%			10%			0
ρ_w	50%	30%	10%	50%	30%	10%	50%	30%	10%	50%	30%	10%	50%	30%	10%	0
ρ_{fc}	20%			20%			20%			20%			20%			0
RCR	RCR:Room Cavity Ratio						Wall Exitance Coefficients (WEC)									
0.0																
1.0	.302	.172	.054	.295	.168	.053	.280	.161	.051	.266	.154	.049	.254	.147	.047	
2.0	.286	.157	.048	.279	.154	.047	.266	.148	.046	.254	.142	.045	.242	.137	.043	
3.0	.265	.141	.042	.259	.139	.042	.247	.134	.041	.237	.130	.040	.227	.125	.039	
4.0	.245	.127	.037	.240	.125	.037	.229	.122	.036	.220	.118	.036	.211	.115	.035	
5.0	.227	.116	.034	.222	.114	.033	.213	.111	.033	.204	.108	.032	.196	.105	.032	
6.0	.211	.106	.030	.207	.104	.030	.198	.102	.030	.191	.099	.029	.183	.097	.029	
7.0	.197	.097	.028	.193	.096	.027	.185	.094	.027	.178	.091	.027	.172	.089	.026	
8.0	.184	.090	.025	.180	.089	.025	.174	.087	.025	.167	.085	.024	.161	.083	.024	
9.0	.172	.083	.023	.169	.082	.023	.163	.081	.023	.157	.079	.023	.152	.077	.022	
10.0	.162	.078	.022	.159	.077	.021	.154	.075	.021	.149	.074	.021	.144	.072	.021	

ρ_{cc}	80%			70%			50%			30%			10%			0
ρ_w	50%	30%	10%	50%	30%	10%	50%	30%	10%	50%	30%	10%	50%	30%	10%	0
ρ_{fc}	20%			20%			20%			20%			20%			0
RCR	RCR:Room Cavity Ratio						Ceiling Cavity Exitance Coefficients (CCEC)									
0.0	.211	.211	.211	.181	.181	.181	.123	.123	.123	.071	.071	.071	.023	.023	.023	
1.0	.201	.177	.156	.172	.152	.134	.117	.105	.093	.068	.061	.054	.022	.019	.017	
2.0	.193	.153	.120	.165	.132	.104	.113	.091	.072	.065	.053	.042	.021	.017	.014	
3.0	.185	.135	.096	.158	.117	.083	.109	.081	.058	.063	.047	.034	.020	.015	.011	
4.0	.177	.122	.080	.152	.106	.070	.105	.074	.049	.060	.043	.029	.019	.014	.010	
5.0	.170	.112	.069	.146	.097	.060	.100	.068	.042	.058	.040	.025	.019	.013	.008	
6.0	.163	.103	.061	.140	.090	.053	.097	.063	.038	.056	.037	.022	.018	.012	.007	
7.0	.156	.097	.055	.134	.084	.048	.093	.059	.034	.054	.035	.020	.017	.011	.007	
8.0	.150	.091	.050	.129	.079	.044	.089	.055	.031	.052	.033	.019	.017	.011	.006	
9.0	.144	.086	.047	.124	.075	.041	.086	.052	.029	.050	.031	.017	.016	.010	.006	
10.0	.138	.082	.044	.119	.071	.039	.083	.050	.027	.048	.030	.016	.016	.010	.005	

C Range: 0 - 360DEG
 C Interval: 22.5DEG
 Test Speed: HIGH
 Temperature: 25.3DEG
 Operators:
 Test Date: 2024-01-15

γ Range: 0 - 180DEG
 γ Interval: 2.0DEG
 Test System: EVERFINE GO-2000B_V1 SYSTEM V2.00.450
 Humidity: 65.0%
 Test Distance: 6.040m [K=1.0000]
 Remarks:

UGR(Unified Glare Rating) Table

NAME: 3030 80D F12-A		TYPE:					WEIGHT:				
SPEC.:		DIM.:					SERIAL No.:				
MFR.:		SUR.: 0.012*1					Shielding Angle:				
ceiling/cavity		0.7	0.7	0.5	0.5	0.3	0.7	0.7	0.5	0.5	0.3
walls		0.5	0.3	0.5	0.3	0.3	0.5	0.3	0.5	0.3	0.3
working plane		0.2	0.2	0.2	0.2	0.2	0.2	0.2	0.2	0.2	0.2
Room dimensions		Viewed crosswise					Viewed endwise				
x = 2H y = 2H		24.9	26.3	25.2	26.6	26.8	24.9	26.4	25.2	26.7	26.9
	3H	26.0	27.3	26.3	27.6	27.9	26.3	27.6	26.6	27.9	28.2
	4H	26.2	27.5	26.6	27.8	28.1	27.2	28.4	27.5	28.7	29.1
	6H	26.3	27.5	26.6	27.8	28.1	28.4	29.6	28.7	29.9	30.2
	8H	26.2	27.4	26.6	27.7	28.1	28.4	29.6	28.8	29.9	30.2
	12H	26.2	27.3	26.6	27.6	28.0	28.4	29.5	28.8	29.8	30.2
	4H 2H	25.4	26.7	25.8	27.0	27.3	25.5	26.8	25.8	27.1	27.4
	3H	26.7	27.9	27.1	28.2	28.6	27.0	28.1	27.4	28.4	28.8
	4H	27.1	28.1	27.5	28.5	28.9	28.1	29.2	28.6	29.5	29.9
	6H	27.2	28.1	27.7	28.5	29.0	29.6	30.5	30.0	30.9	31.3
	8H	27.2	28.1	27.7	28.5	28.9	29.6	30.4	30.1	30.9	31.3
	12H	27.2	28.0	27.7	28.4	28.9	29.6	30.4	30.1	30.8	31.3
	8H 4H	27.5	28.4	28.0	28.8	29.2	28.5	29.3	28.9	29.7	30.2
	6H	27.9	28.6	28.4	29.1	29.6	30.1	30.8	30.6	31.2	31.7
	8H	28.0	28.6	28.5	29.1	29.6	30.1	30.8	30.7	31.2	31.7
	12H	28.1	28.6	28.6	29.1	29.6	30.2	30.7	30.7	31.2	31.7
	12H 4H	27.7	28.4	28.1	28.9	29.3	28.5	29.3	29.0	29.7	30.2
	6H	28.1	28.7	28.6	29.2	29.7	30.1	30.7	30.6	31.2	31.7
	8H	28.2	28.8	28.8	29.3	29.8	30.2	30.7	30.7	31.2	31.8
Variations with the observer position at spacings(CIE Pub.117):											
S = 1.0H		+ 0.1 / - 0.3					+ 0.1 / - 0.1				
1.5H		+ 0.2 / - 0.4					+ 0.3 / - 0.3				
2.0H		+ 0.3 / - 0.4					+ 0.2 / - 0.2				

CIE Pub.117, 1411 lm Total Lamp Luminous Flux Correct (8log(F/F0) = 1.2)
 Area: 0.01 m2

C Range: 0 - 360DEG
 C Interval: 22.5DEG
 Test Speed: HIGH
 Temperature:25.3DEG
 Operators:
 Test Date:2024-01-15

γ Range: 0 - 180DEG
 γ Interval: 2.0DEG
 Test System:EVERFINE GO-2000B_V1 SYSTEM V2.00.450
 Humidity:65.0%
 Test Distance:6.040m [K=1.0000]
 Remarks:

UTILIZATION FACTORS TABLE

NAME: 3030 80D F12-A	TYPE:	WEIGHT:
SPEC.:	DIM.:	SERIAL No.:
MFR.:	SUR.: 0.012*1	Shielding Angle:

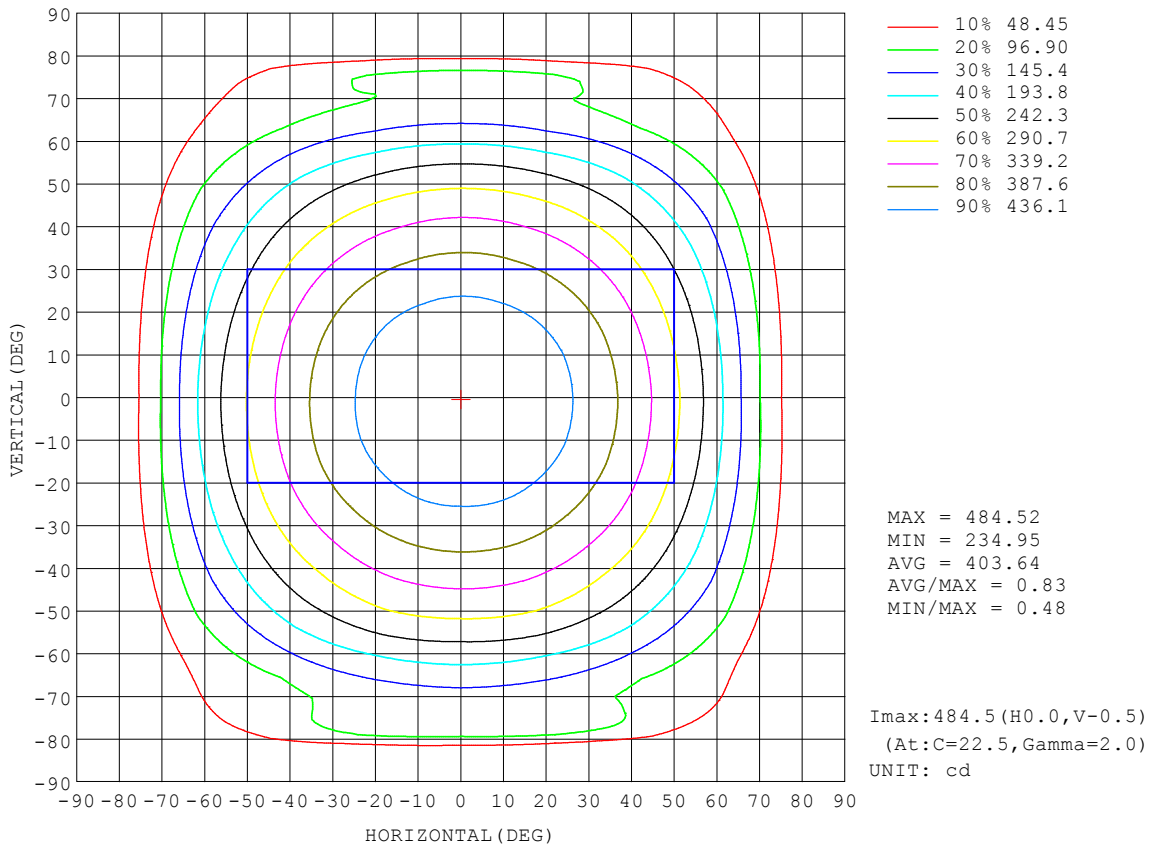
REFLECTANCE										
Ceiling	0.8	0.8	0.8	0.7	0.7	0.7	0.5	0.5	0.5	0
Walls	0.7	0.5	0.3	0.7	0.5	0.3	0.7	0.5	0.3	0
Working plane	0.2	0.2	0.2	0.2	0.2	0.2	0.2	0.2	0.2	0
ROOM INDEX	UTILIZATION FACTORS (PERCENT) $k(RI) \times RCR = 5$									
k = 0.60	57	45	38	56	45	38	55	45	38	32
0.80	67	55	48	66	55	48	64	54	47	41
1.00	76	64	57	74	64	57	72	65	56	49
1.25	83	72	65	81	71	65	78	70	64	56
1.50	88	78	71	86	77	70	83	75	69	61
2.00	95	86	80	93	85	79	89	82	77	69
2.50	98	91	85	96	89	84	92	86	81	73
3.00	102	95	89	99	93	88	95	90	86	77
4.00	106	100	95	103	98	94	98	94	91	81
5.00	108	103	99	105	101	97	100	97	94	84
ROOM INDEX	UF(total)									Direct
According to DIN EN 13032-2 2004			Suspended				SHRNOM = 1.25			

C Range: 0 - 360DEG
 C Interval: 22.5DEG
 Test Speed: HIGH
 Temperature: 25.3DEG
 Operators:
 Test Date: 2024-01-15

γ Range: 0 - 180DEG
 γ Interval: 2.0DEG
 Test System: EVERFINE GO-2000B_V1 SYSTEM V2.00.450
 Humidity: 65.0%
 Test Distance: 6.040m [K=1.0000]
 Remarks:

ISOCANDELA DIAGRAM

NAME: 3030 80D F12-A	TYPE:	WEIGHT:
SPEC.:	DIM.:	SERIAL No.:
MFR.:	SUR.: 0.012*1	Shielding Angle:



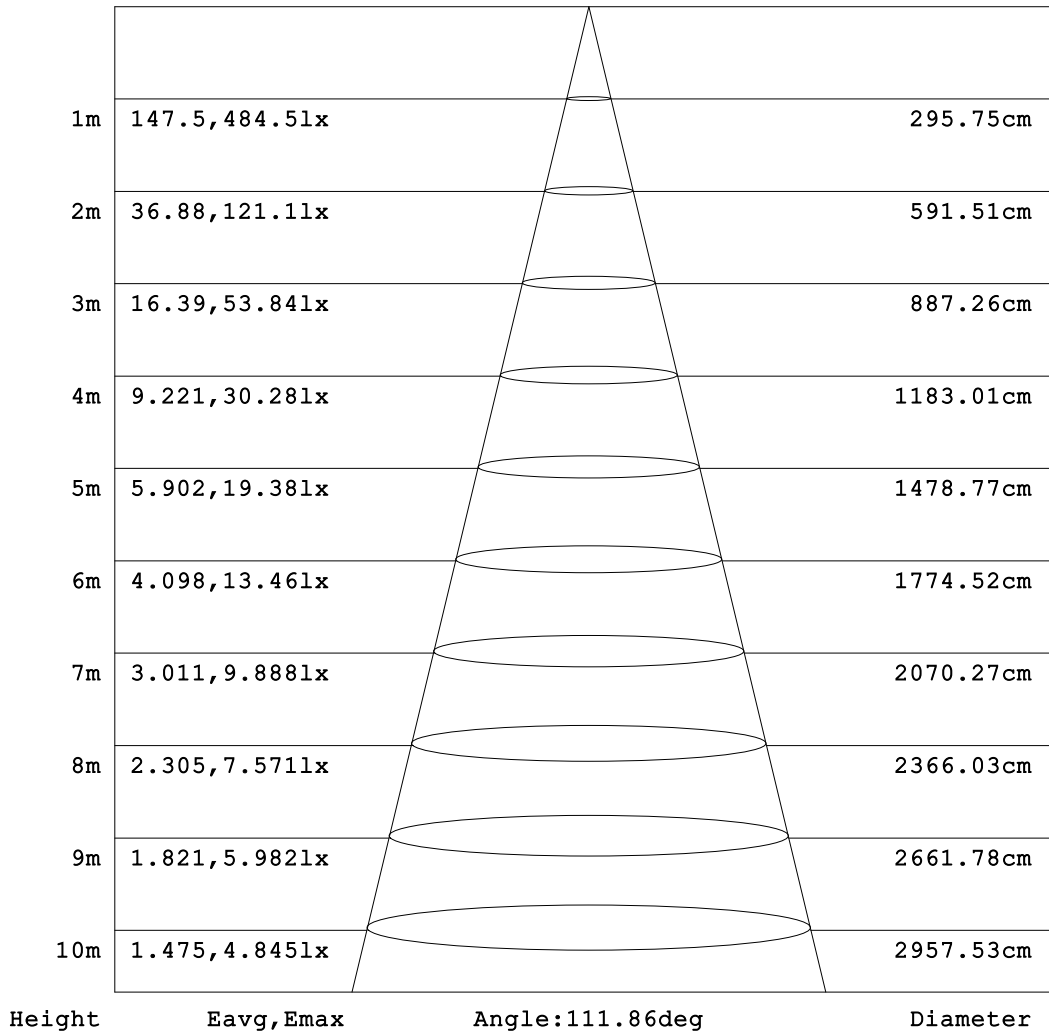
C Range: 0 - 360DEG
 C Interval: 22.5DEG
 Test Speed: HIGH
 Temperature: 25.3DEG
 Operators:
 Test Date: 2024-01-15

γ Range: 0 - 180DEG
 γ Interval: 2.0DEG
 Test System: EVERFINE GO-2000B_V1 SYSTEM V2.00.450
 Humidity: 65.0%
 Test Distance: 6.040m [K=1.0000]
 Remarks:

AAI Figure

NAME: 3030 80D F12-A	TYPE:	WEIGHT:
SPEC.:	DIM.:	SERIAL No.:
MFR.:	SUR.: 0.012*1	Shielding Angle:

Flux out:1019 lm



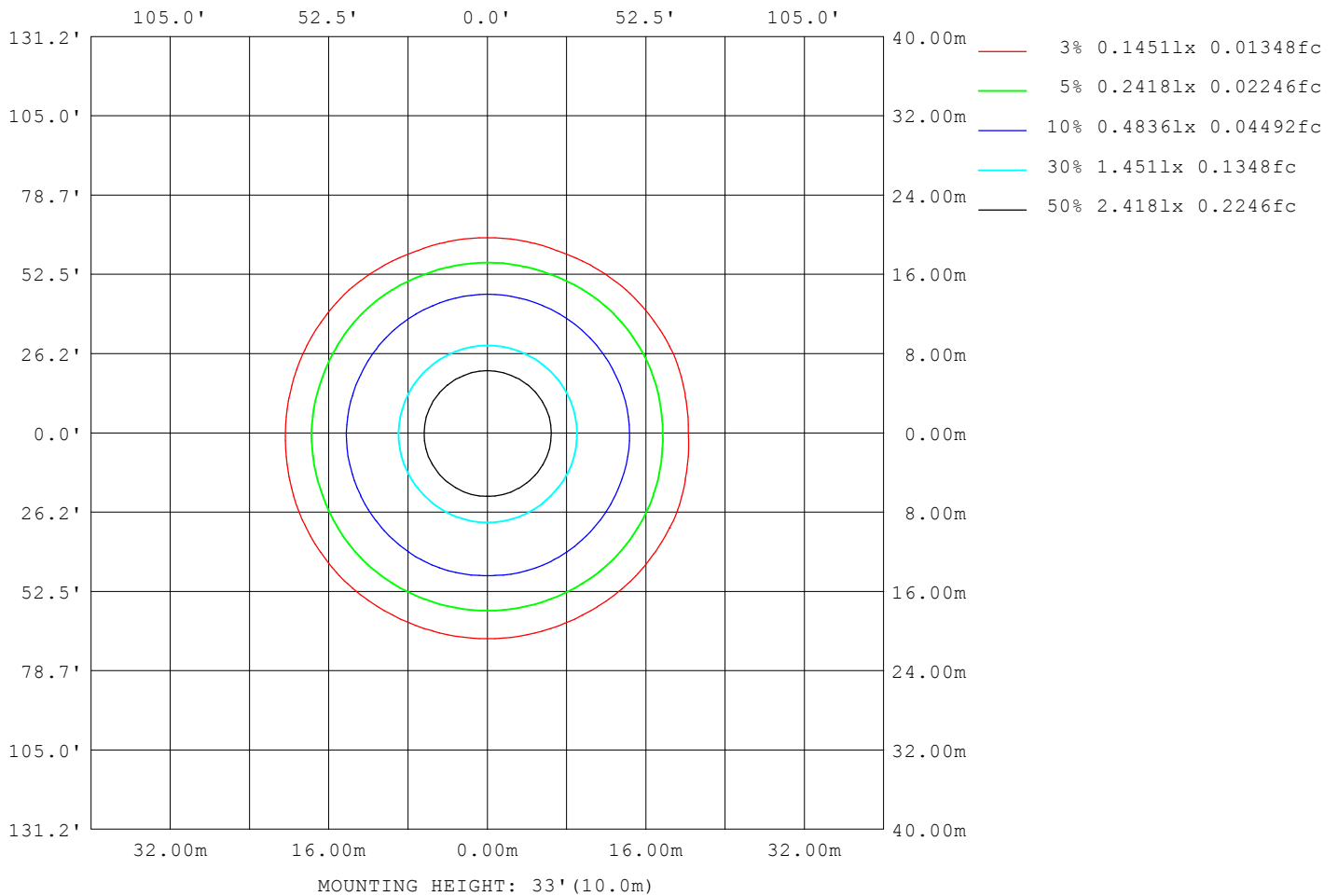
Note: The Curves indicate the illuminated area and the average illumination when the luminaire is at different distance.

C Range: 0 - 360DEG
 C Interval: 22.5DEG
 Test Speed: HIGH
 Temperature: 25.3DEG
 Operators:
 Test Date: 2024-01-15

γ Range: 0 - 180DEG
 γ Interval: 2.0DEG
 Test System: EVERFINE GO-2000B_V1 SYSTEM V2.00.450
 Humidity: 65.0%
 Test Distance: 6.040m [K=1.0000]
 Remarks:

ISOLUX DIAGRAM

NAME: 3030 80D F12-A	TYPE:	WEIGHT:
SPEC.:	DIM.:	SERIAL No.:
MFR.:	SUR.: 0.012*1	Shielding Angle:



C Range: 0 - 360DEG
 C Interval: 22.5DEG
 Test Speed: HIGH
 Temperature: 25.3DEG
 Operators:
 Test Date: 2024-01-15

γ Range: 0 - 180DEG
 γ Interval: 2.0DEG
 Test System: EVERFINE GO-2000B_V1 SYSTEM V2.00.450
 Humidity: 65.0%
 Test Distance: 6.040m [K=1.0000]
 Remarks:

LED Avg.L Report

NAME: 3030 80D F12-A	TYPE:	WEIGHT:
SPEC.:	DIM.:	SERIAL No.:
MFR.:	SUR.: 0.012*1	Shielding Angle:

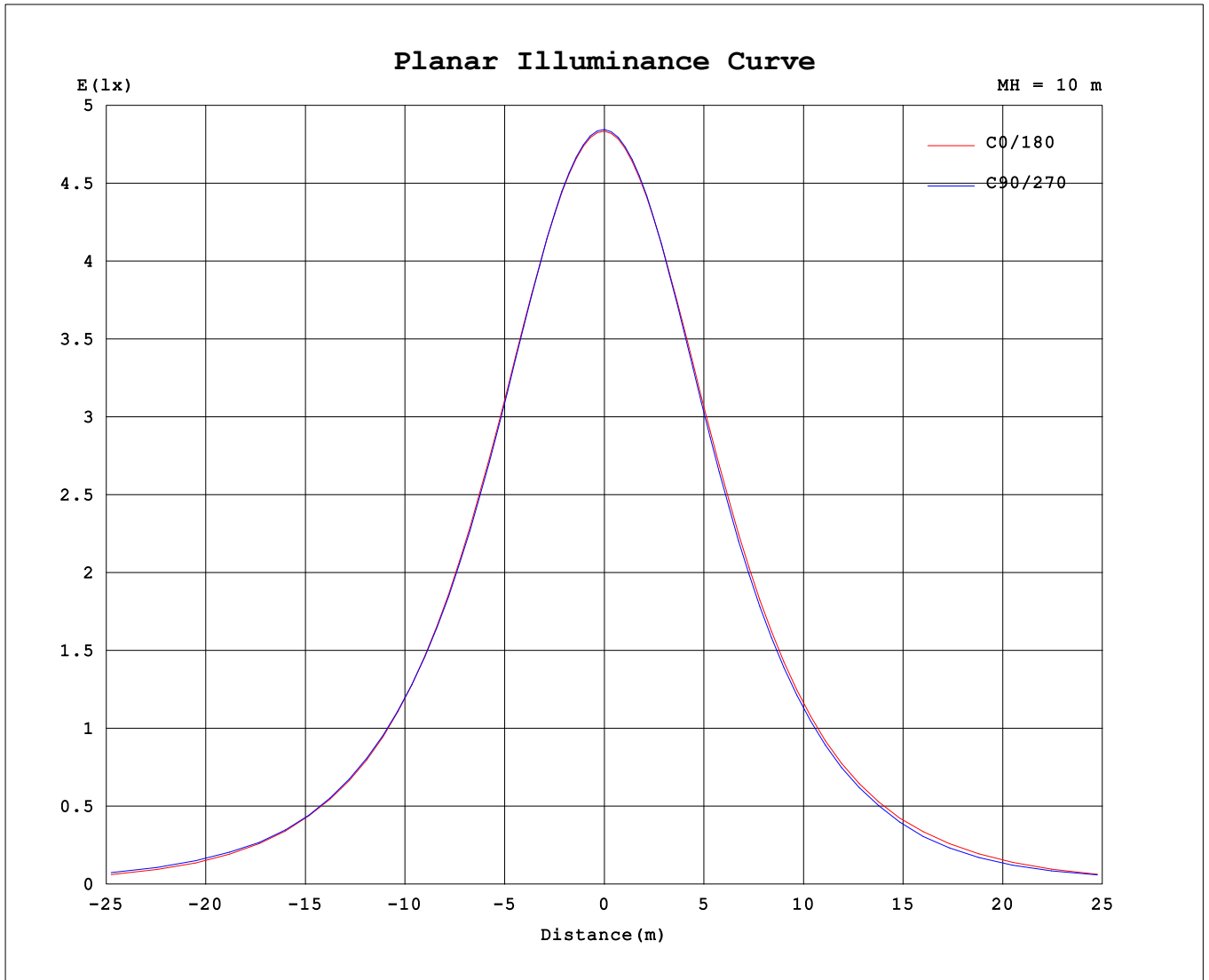
AvgL	cd/m2
L_0~180 (65) av	36551
L_0~180 (75) av	19520
L_0~180 (85) av	60
L_90~270 (65) av	36485
L_90~270 (75) av	46940
L_90~270 (85) av	18693
L_45 (65) av	37775
L_45 (75) av	29784
L_45 (85) av	19655

Standard: GB/T 29293-2012

C Range: 0 - 360DEG
 C Interval: 22.5DEG
 Test Speed: HIGH
 Temperature:25.3DEG
 Operators:
 Test Date:2024-01-15

γ Range: 0 - 180DEG
 γ Interval: 2.0DEG
 Test System:EVERFINE GO-2000B_V1 SYSTEM V2.00.450
 Humidity:65.0%
 Test Distance:6.040m [K=1.0000]
 Remarks:

Planar Illuminance Curve



C Range: 0 - 360DEG
C Interval: 22.5DEG
Test Speed: HIGH
Temperature:25.3DEG
Operators:
Test Date:2024-01-15

γ Range: 0 - 180DEG
 γ Interval: 2.0DEG
Test System:EVERFINE GO-2000B_V1 SYSTEM V2.00.450
Humidity:65.0%
Test Distance:6.040m [K=1.0000]
Remarks:

LUMINOUS DISTRIBUTION INTENSITY DATA

NAME: 3030 80D F12-A	TYPE:	WEIGHT:
SPEC.:	DIM.:	SERIAL No.:
MFR.:	SUR.: 0.012*1	Shielding Angle:

Table--1

UNIT: cd

C (DEG) \ γ (DEG)	0	22.5	45	67.5	90	112.5	135	157.5	180	202.5	225	247.5	270	292.5	315	337.5			
0	484	484	484	484	484	484	484	484	484	484	484	484	484	484	484	484			
5	484	484	484	484	484	483	483	483	482	482	482	482	483	483	483	483			
10	478	479	478	478	478	478	477	476	476	475	476	475	476	476	477	478			
15	472	472	472	472	471	471	470	469	468	468	468	467	468	468	470	471			
20	457	458	457	456	455	455	455	454	453	452	451	449	450	450	454	456			
25	445	446	444	443	442	442	441	441	439	438	436	434	434	435	440	443			
30	421	423	420	419	417	417	416	417	415	413	410	407	407	409	414	419			
35	403	404	401	400	398	398	397	398	395	393	389	386	387	388	393	399			
40	370	371	367	368	367	366	363	364	362	358	354	351	352	353	358	365			
45	344	345	343	345	344	342	338	338	336	331	327	325	326	327	332	338			
50	302	302	301	307	305	305	296	295	293	287	283	281	282	283	288	294			
55	270	270	271	276	272	274	267	263	261	254	251	249	249	250	255	261			
60	209	217	221	219	216	218	218	211	210	201	199	188	187	188	201	207			
65	165	179	182	179	180	179	180	175	167	164	158	147	146	147	160	169			
70	98.5	124	117	128	132	127	116	121	99.7	109	98.6	99.4	109	102	99.2	112			
75	58.6	87.5	89.0	113	120	112	87.3	85.4	60.7	74.2	69.2	102	122	110	71.3	75.7			
80	13.8	39.1	95.2	94.3	86.2	97.3	89.3	38.1	14.7	32.5	57.6	43.5	37.5	40.7	57.8	34.5			
85	0.34	29.5	22.6	19.5	18.8	20.3	24.8	29.8	0.51	19.8	20.2	19.2	17.9	18.8	19.7	21.6			
90	0.21	8.46	11.4	12.6	12.6	12.4	11.0	8.29	0.25	7.63	10.8	12.2	12.8	12.7	11.5	8.59			
95	0.21	10.9	10.7	11.4	11.6	11.2	10.1	9.21	0.27	7.95	10.6	11.2	11.5	11.4	11.3	9.68			
100	0.29	8.30	14.7	12.0	12.1	11.6	13.0	9.88	0.35	6.93	12.9	12.6	13.7	13.2	14.5	8.00			
105	0.35	2.68	21.3	15.5	14.6	14.7	17.7	3.52	0.42	5.15	18.6	16.6	17.6	18.0	21.1	5.53			
110	0.47	0.58	12.0	21.6	19.7	20.7	14.1	0.65	0.52	3.38	13.1	23.5	24.0	24.1	14.6	3.49			
115	0.55	0.61	5.06	18.2	20.9	18.7	5.40	0.60	0.60	1.97	9.00	17.3	21.3	18.6	10.2	2.17			
120	0.67	0.70	1.99	6.11	7.86	6.19	2.15	0.70	0.71	0.92	6.32	11.2	13.5	11.7	7.26	0.87			
125	0.75	0.77	0.92	4.08	5.38	4.23	0.86	0.78	0.79	0.92	4.82	8.86	10.7	9.51	5.79	0.87			
130	0.86	0.87	0.91	1.26	2.31	1.30	0.85	0.89	0.90	1.00	2.63	6.71	8.40	7.26	3.14	0.95			
135	0.94	0.94	0.95	1.05	1.12	0.99	0.93	0.96	0.98	1.06	1.56	4.66	6.74	5.37	1.64	1.02			
140	1.04	1.04	1.03	1.09	1.10	1.06	1.03	1.06	1.08	1.14	1.37	2.18	3.80	2.49	1.32	1.11			
145	1.10	1.10	1.09	1.13	1.14	1.12	1.10	1.13	1.15	1.19	1.37	1.62	2.00	1.57	1.34	1.17			
150	1.18	1.20	1.17	1.22	1.21	1.21	1.19	1.22	1.23	1.26	1.38	1.52	1.55	1.50	1.38	1.24			
155	1.23	1.24	1.23	1.26	1.26	1.27	1.24	1.28	1.28	1.31	1.39	1.50	1.54	1.49	1.40	1.29			
160	1.31	1.32	1.30	1.33	1.33	1.35	1.32	1.35	1.35	1.37	1.43	1.47	1.52	1.49	1.44	1.36			
165	1.36	1.37	1.35	1.38	1.39	1.40	1.37	1.40	1.39	1.41	1.45	1.47	1.51	1.49	1.46	1.40			
170	1.41	1.44	1.42	1.45	1.45	1.46	1.43	1.45	1.45	1.46	1.49	1.49	1.53	1.50	1.50	1.45			
175	1.45	1.47	1.45	1.48	1.48	1.50	1.46	1.48	1.48	1.49	1.51	1.50	1.53	1.51	1.51	1.48			
180	1.49	1.49	1.49	1.50	1.52	1.52	1.49	1.49	1.49	1.51	1.51	1.52	1.52	1.52	1.51	1.50			

C Range: 0 - 360DEG
 C Interval: 22.5DEG
 Test Speed: HIGH
 Temperature: 25.3DEG
 Operators:
 Test Date: 2024-01-15

γ Range: 0 - 180DEG
 γ Interval: 2.0DEG
 Test System: EVERFINE GO-2000B_V1 SYSTEM V2.00.450
 Humidity: 65.0%
 Test Distance: 6.040m [K=1.0000]
 Remarks: